

UCHIDA

D-MOLO⁺

for operation



Module type expandable operation desk, D-MOLO⁺

It is ideal for the office using multiple monitor to deal with multitude of information in real time, such as dealing room, data center, building and factory monitoring center and so on. In order to meet future IT equipment and organizational change flexibly, and at low cost, it uses fundamental D-MOLO philosophy, by making the parts modular, and combine the usage as needed. D-MOLO⁺ has evolved further by increasing IT equipment capability. It deals with massive amount of cable and equipment safely, and efficiently, even when multiple monitors are used, it provides spacious and workable desk top work area.

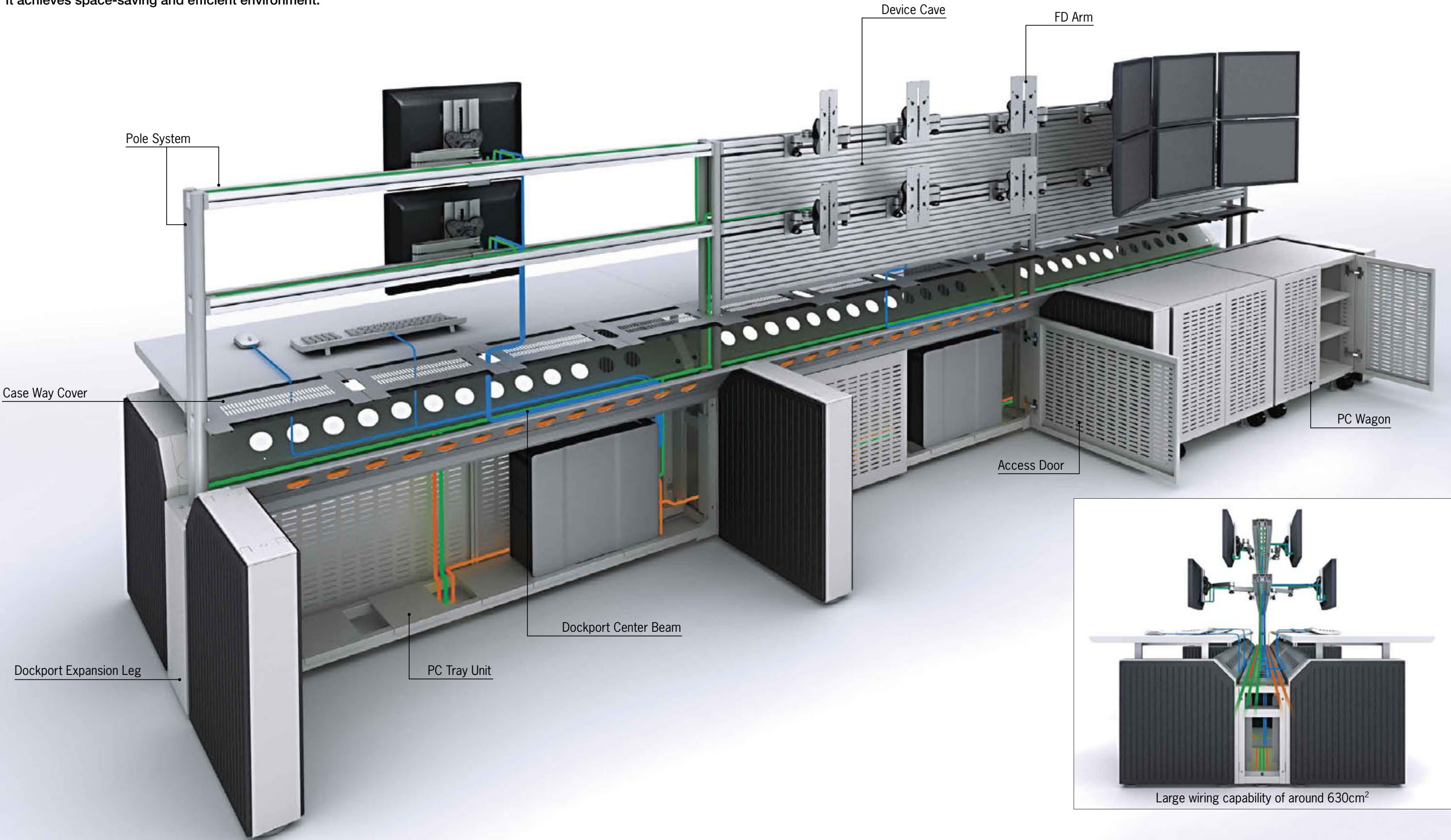


Single layout,
connecting **Dockport** on the back.

Double layout with **Dockport** placing in the center.

Store cable and equipment safe and efficiently.

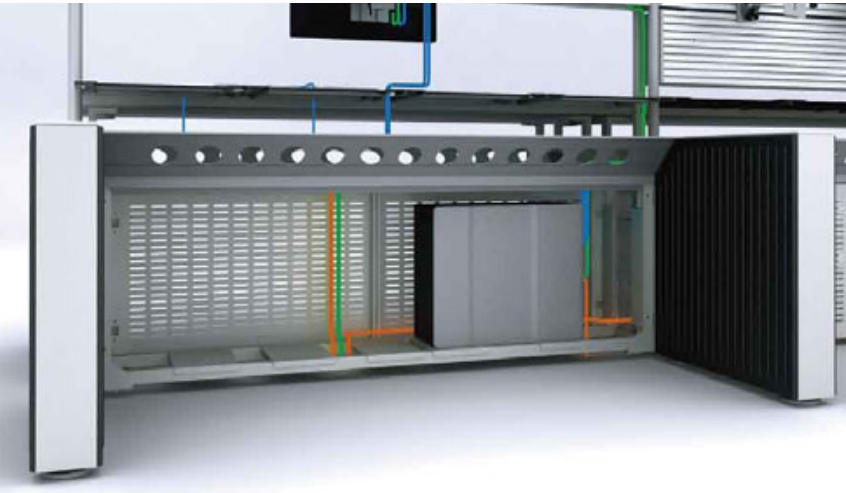
High volume cable management space will appear by removing the case way cover on the table top, and its wide opening, accessible by hand, makes easier for managing the cables. Below the case way cover, there is a center beam, high volume cables can be stored and managed. It also provides the horizontal access to the cables. Vertical wiring is achieved by pole system, which is connected to each display. Attaching the panel (device cave), it enables the wiring inside the panel. Below center-beam, optional PC tray can be set for storing servers. It is safer and clears the area, compare with placing the server on the desk top or on the floor. By storing the wires and equipments three-dimensionally, it achieves space-saving and efficient environment.



Expandability depending on various scenes and demands.

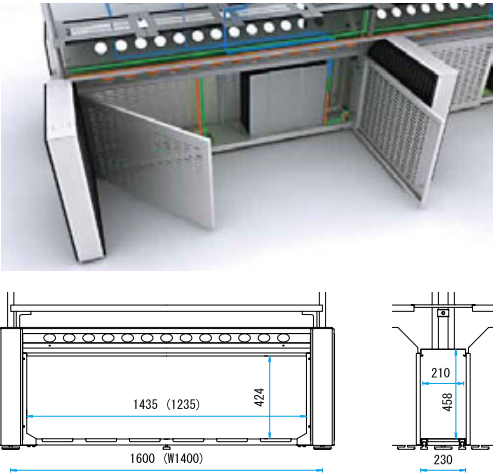
PC Tray Unit

It is a unit for storing servers, and other equipments in Dockport.
Tray can slide horizontally for avoiding any cable coming up from the floor.



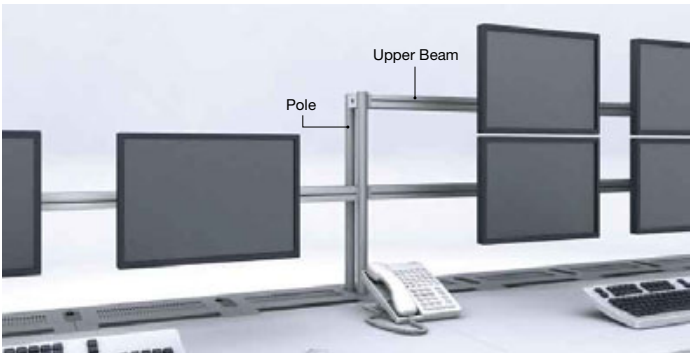
Access Door

Door which covers the PC tray unit. Punching hole keep the air flow for ventilation, and double door is used for easy access to the PC tray unit.



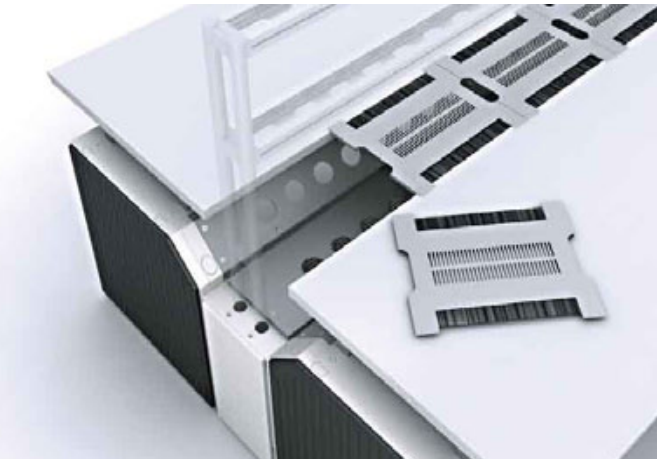
Pole System

System, which consist from pole and upper beam. Display can be set three dimensionally, and handle the wiring safely. Depending on the display requirement, 3 sizes (H1000mm, 1300mm and 1500mm) of pole is available. By adding the panel (device cave), it can store the wiring inside the panel as well.



Case Way Cover

Outer cover. Easy to attach/detach cover is equipped with brush on the slit for avoiding dust coming inside the case-way. Even after setting the cables, it avoids the dust from entering inside the cover.



Surface

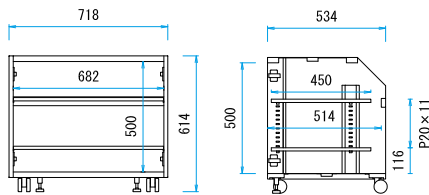
Table top height can be selected from three (3) heights: H740mm, 720mm or 700mm. It can adjust the height, depending on the worker's physique.

	Depth (mm)	Wide (mm)
Surface Size	715	1400 • 1600
	975	1400 • 1600



PC Wagon

Wagon for storing excess equipment. Two (2) shelves comes standard, which is height adjustable. Punching hole on the door keep the ventilation and double door makes easy access/maintenance for the equipment. In the bottom shelf, it has slit for anti-tilting belt, which prevents the servers from collapsing, in case of earthquake.

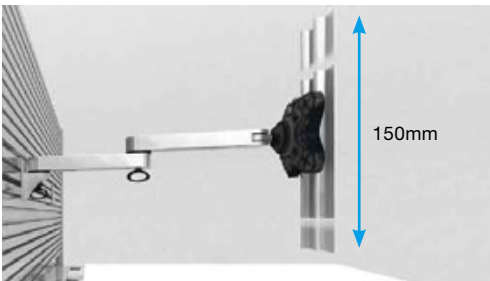


To keep enough leg room, it is recommended to use the PC wagon with the table top with 975mm depth.

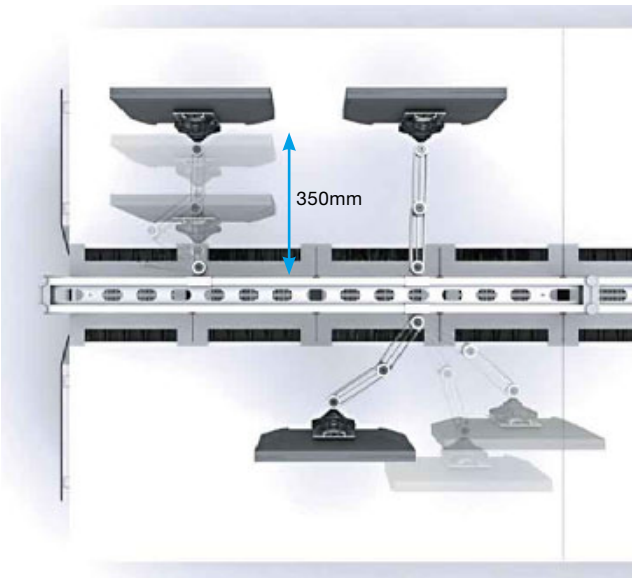


FD Arm

Double folding FD arm. It moves forward/backward, up/down, tilt, and rotation.



- VESA: Compatible with VESA 75 and VESA 100
- Maximum Load: Display up to 12 kg
- Forward/Back movement range: 350mm
- Up/Down movement range: 150mm
- Tilt range: Up/Down 90 degree, Left/Right 180 degree
- Rotation: 360 degree



Work Surface Color



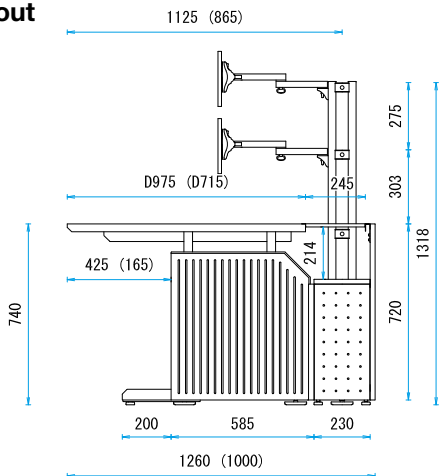
Cover Color



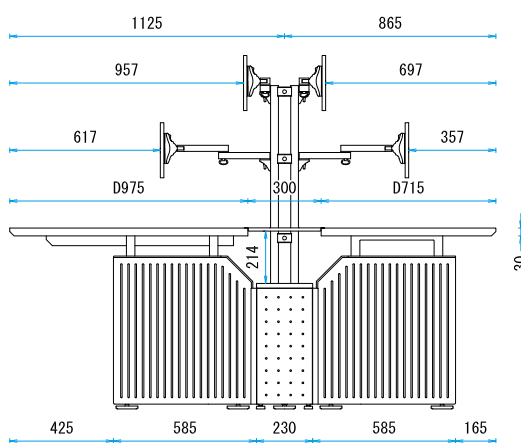
Dockport Cover Color



Single layout



Double layout





D-MOLO⁺ for operation



UCHIDA YOKO CO., LTD.

4-7, Shinkawa 2-Chome, Chuo-ku, Tokyo 104-8282, Japan

e-mail: gm@uchida.co.jp

<http://www.uchida.co.jp>

- Content in this catalog covers the information as of February 28, 2010.
- For Information in this catalog may be subject to change without notice.